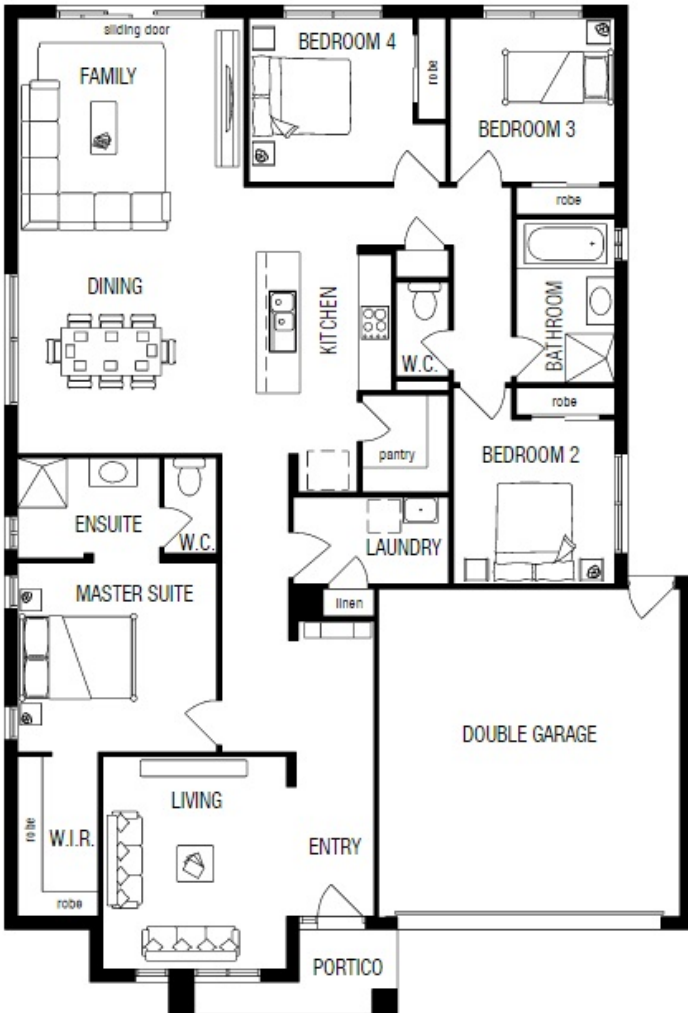


# HOUSE & LAND PACKAGE



DESIGN	Tulloch 22 RHS
FACADE	Plantation
PRICE	\$427,485*
LOT	1109
FRONT	12.5
SIZE	312.0m <sup>2</sup>

The above image shows items not included in the advertised price: landscaping, fencing, concrete pavers, window treatments and furnishings.



- ### INCLUSIONS
- Panel lift or sectional garage
  - Coloured concrete driveway
  - Ducted heating throughout the home
  - Tiles to wet areas
  - Carpets to bedrooms
  - Timber laminate flooring to living areas
  - Fixed site costs
  - Contact: Ryan Clark on 0413 271 988 for details

Call 1300 136 409 • Visit [www.belmondonclyde.com.au](http://www.belmondonclyde.com.au) • Email [sales@belmondonclyde.com.au](mailto:sales@belmondonclyde.com.au)

\*Price is correct as at time of publication and is subject to land availability and may change as a result of variations in the inclusions or specifications selected by the purchaser or due to other circumstances that may affect the price as set out in the Development Design Guidelines, changes to the building contract, or changes in local, state or federal government laws. House design is subject to developer approval.

Package price is based upon Metricon specifications and the advertised inclusion list above. Image depicts items such as landscaping, fencing, concrete pavers, window treatments and furnishings which are not included in the advertised price. For full terms and conditions on Metricon products or for a full list of detailed inclusions please visit [www.metricon.com.au](http://www.metricon.com.au) or speak with a sales consultant. Price valid until 31st January 2017.