



# Stage 15a



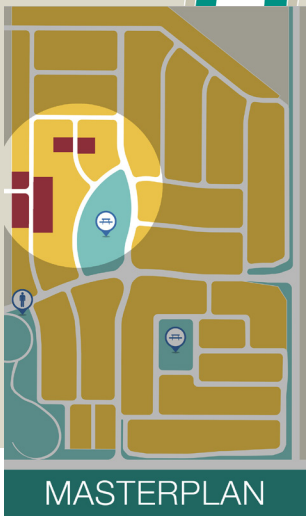
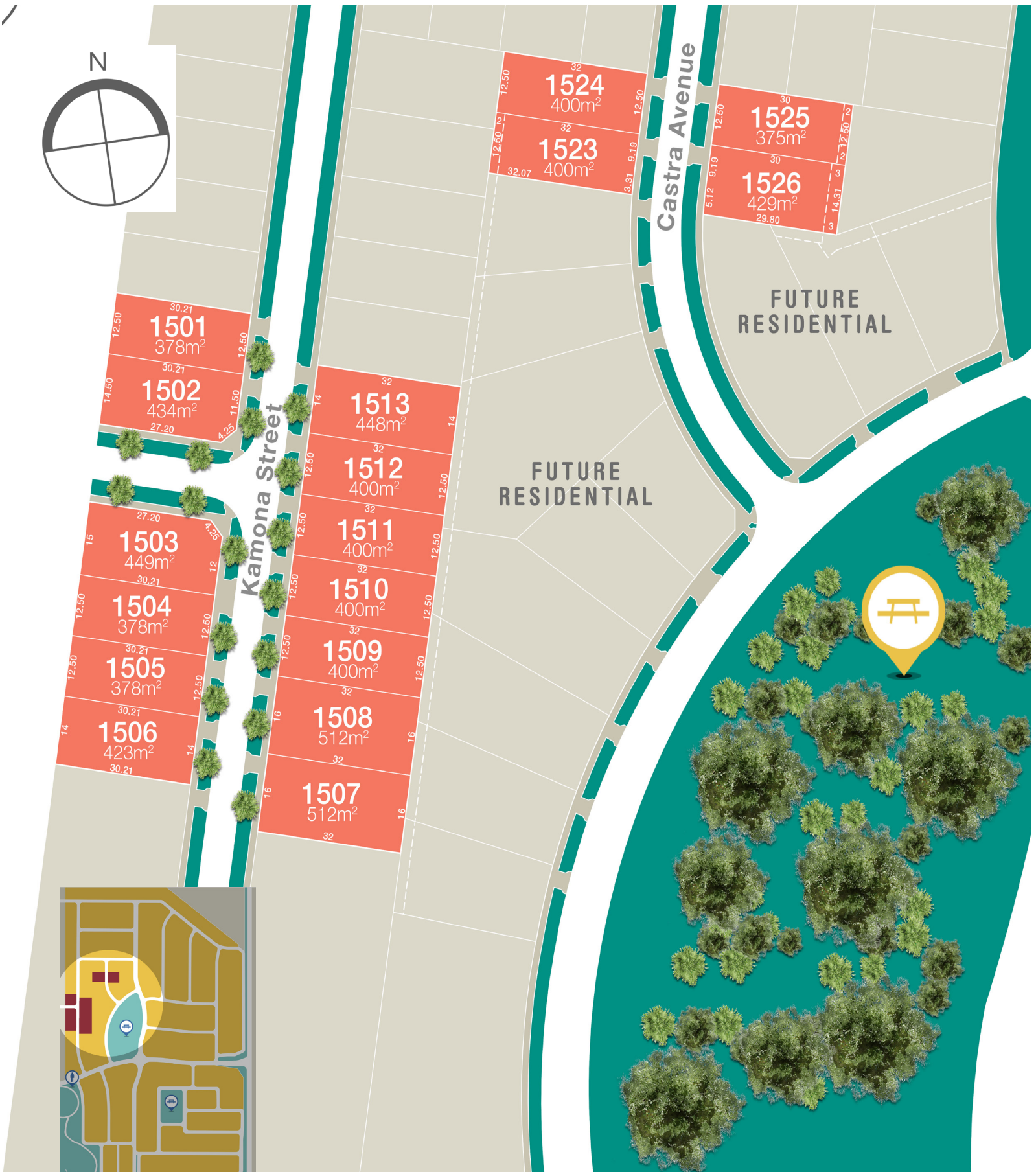
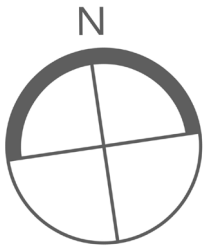
## Belmond on Clyde Land Release

LOTS RANGING IN SIZE FROM 378m<sup>2</sup> TO 512m<sup>2</sup>

FRONTAGES UP TO 16m

LOCATED NEXT TO HILLTOP PARK





**SALES AND INFORMATION CENTRE**

355 Clyde-Five Ways Road, Clyde VIC 3978  
Call 1300 BELMOND or visit [belmondonclyde.com.au](http://belmondonclyde.com.au)



\*Map not to scale. All details on this plan are subject to approval by the relevant authorities and as such dimensions and other details may vary. Refer to the plan of sub division contained in the contract of sale. Photographs and illustrations in this brochure are intended to be a visual aid only and do not necessarily depict the actual development. All information is subject to change without notice. February 2017